

## LUXEON Go

Standard LED Headlight Source for Mainstream Car Segments



LUXEON Go are off-the-shelf building blocks for mainstream LED headlighting applications. Combining compactness, high geometrical precision, and integrated thermal management, they reduce system complexity and cost while still offering design flexibility. Three flux performance levels and long-term supportability make the LUXEON Go portfolio a perfect fit for cross-platform roll-out across mainstream car segments.

### FEATURES AND BENEFITS

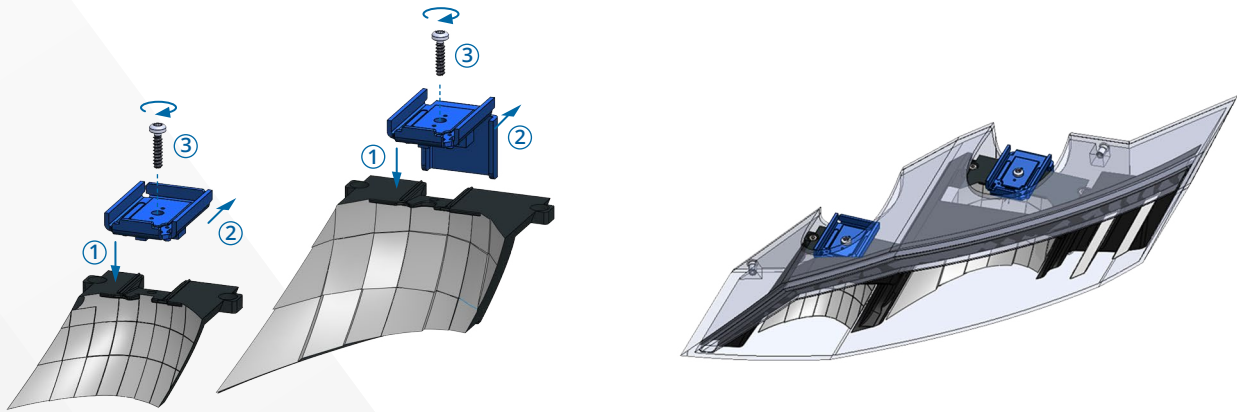
- Off-the-shelf solution with integrated heat management to shorten lead time to market and minimize development effort
- Compact size allows a wide variety of design options
- Tight tolerances for increased optical system performance
- Easy mechanical referencing and assembly during headlamp manufacturing process
- Available in three configurations (1x2, 1x3, and 1x4) to cover a wide range of desired flux performance levels
- Continuous flux improvement within a given footprint enables even more cost-effective headlamp engineering

### PRIMARY APPLICATIONS

- Low beam and high beam
- AFS functionality
- Cornering light

# Reduced System Complexity with LUXEON Go

## Easy Assembly through Well-Defined Interfaces



## Application Example

### Cost-Effective Low-Beam/High-Beam System with Just Two LUXEON Go Light Sources

#### Low beam

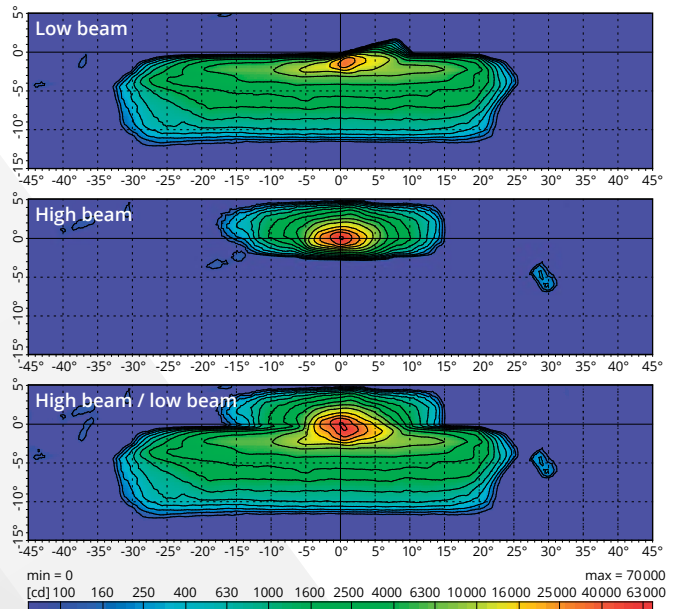
- 1 × LUXEON Go 1x3 at 1 A, 1000 lm @  $T_a = 25^\circ\text{C}$
- Flux in beam\*: 472 lm
- Optical efficiency\*: 47%
- Meets ECE requirements

#### High beam

- 1 × LUXEON Go 1x2 at 1 A, 667 lm @  $T_a = 25^\circ\text{C}$
- Flux in beam\*: 297 lm
- $I_{\text{max}}^* = 64\,000\text{ cd}$
- Optical efficiency\*: 45%
- Meets ECE requirements

#### Combined high beam / low beam

- Flux in beam\*: 769 lm
- $I_{\text{max}}^* = 66\,000\text{ cd}$
- Optical efficiency\*: 46%

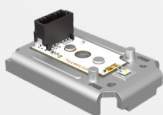


\* including losses at the cover glass

## Product Portfolio

### LUXEON Go 1x2

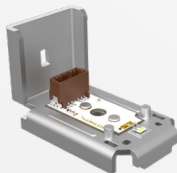
600 lm @  $T_a = 50^\circ\text{C}$  and 1.0 A



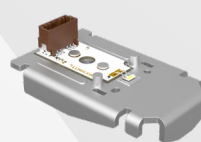
W × L × H\*\*:  
40 mm × 60 mm × 10 mm

### LUXEON Go 1x3

880 lm @  $T_a = 50^\circ\text{C}$  and 1.0 A



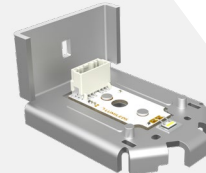
W × L × H:  
40 mm × 67 mm × 45 mm



W × L × H\*\*:  
47 mm × 76 mm × 14 mm

### LUXEON Go 1x4

1100 lm @  $T_a = 50^\circ\text{C}$  and 0.9 A



W × L × H:  
55 mm × 77 mm × 41 mm

\*\*excluding connector

©2020 Lumileds Holding B.V. All rights reserved. LUXEON is a registered trademark of the Lumileds Holding B.V. in the United States and other countries.

[lumileds.com](http://lumileds.com)

Neither Lumileds Holding B.V. nor its affiliates shall be liable for any kind of loss of data or any other damages, direct, indirect or consequential, resulting from the use of the provided information and data. Although Lumileds Holding B.V. and/or its affiliates have attempted to provide the most accurate information and data, the materials and services information and data are provided "as is," and neither Lumileds Holding B.V. nor its affiliates warrants or guarantees the contents and correctness of the provided information and data. Lumileds Holding B.V. and its affiliates reserve the right to make changes without notice. You as user agree to this disclaimer and user agreement with the download or use of the provided materials, information and data. A listing of Lumileds product/patent coverage may be accessed at [lumileds.com/patents](http://lumileds.com/patents).